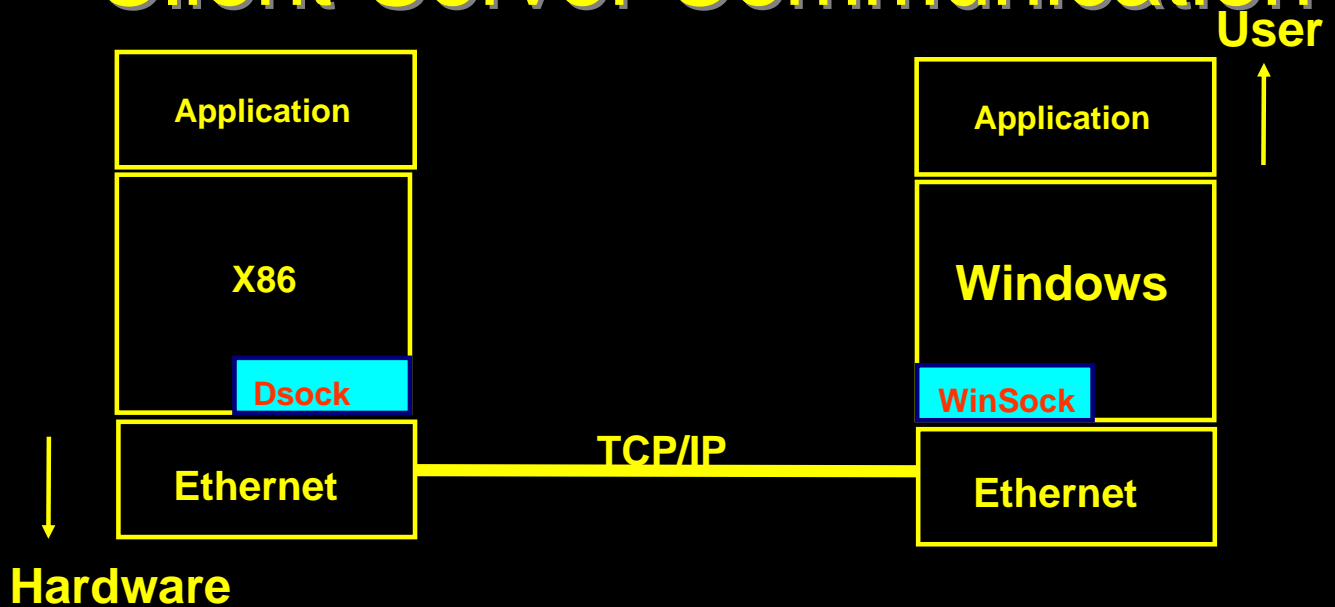




การเชื่อมต่อระหว่าง Client-Server (TCP/IP Protocol)



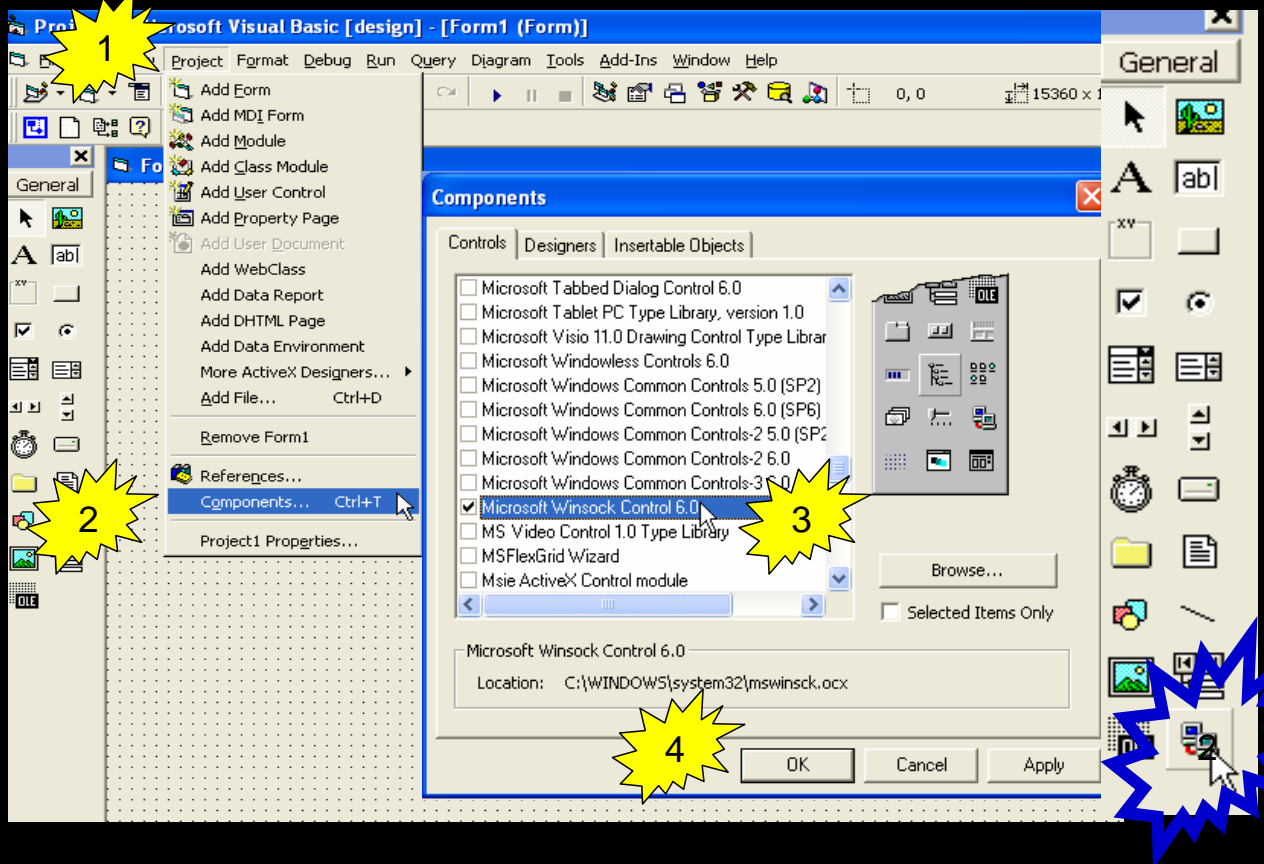
Client-Server Communication



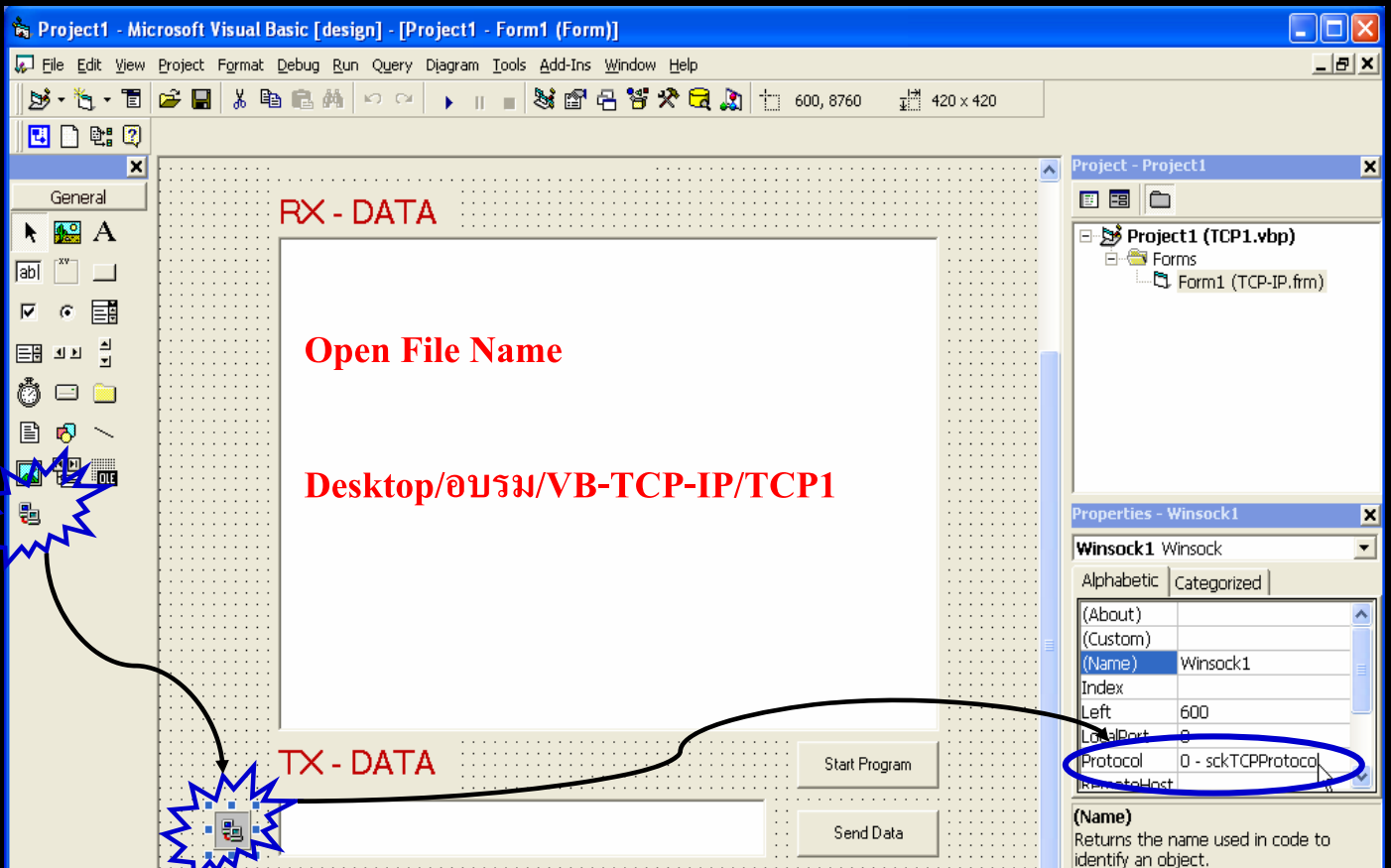
TCP/IP Transmission Control Protocol/Internet Protocol



Add Winsock Control



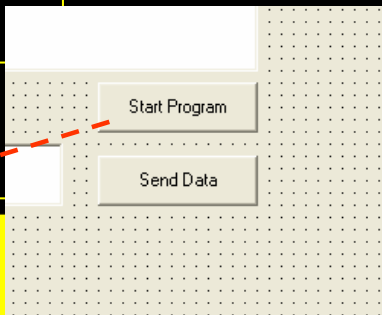
Add Winsock Control





Client	Server	Note
SocketCreate(TCP_SOCKET);	Winsock1.Listen	
SocketConnect(s,server-IP,Port);		
SocketConnect() = True	Winsock1.Accept	
SocketPutChar(s,data) SocketPutString(s,data)	Winsock1.GetData	
SocketDataReady(s) -SocketGetChar(s,&data) -SocketGetString(s,data,Buf)	Winsock1.SendData	
SocketClose(s) SocketDestory(s)	Winsock1_Close	



Client	Server	Note
SocketCreate(TCP_SOCKET);		
SocketConnect(s,server-IP,Port);		
		
		<pre>Private Sub Command1_Click() Text1.Text = "Wait" Winsock1.LocalPort = "9014" Winsock1.Listen End Sub</pre>

หมายเหตุ : Port กำหนดให้ตรงกับเครื่อง X86



Client	Server	Note
		Server IP
		Port
	Winsock1.Listen	
SocketConnect() = True	← Winsock1.Accept	

Private Sub Winsock1_ConnectionRequest(ByVal requestID As Long)

If Winsock1.State <> sckClosed Then Winsock1.Close

Winsock1.Accept requestID

Text1.Text = "Connect OK"

End Sub



Client	Server	Note
		Server IP
		Port
	Winsock1.Listen	
SocketPutChar(s,data)	Winsock1.Accept	
SocketPutString(s,data)	→ Winsock1.GetData	

Private Sub Winsock1_DataArrival(ByVal bytesTotal As Long)

Dim StrValue As String

Winsock1.GetData StrValue

Text1.Text = Text1.Text & StrValue

End Sub



Client	Server	Note
		Server IP
		Port
	Winsock1.Listen	
	Winsock1.Accept	
	Winsock1.GetData	
-SocketGetChar(s,&data) -SocketGetString(s,data,Buf)	Winsock1.SendData	

Private Sub Command2_Click()

Winsock1.SendData Text2.Text

End Sub



Client	Server	Note
Private Sub Winsock1_Close() <u>Text1.Text = Text1.Text & "Close Conect"</u> <u>Winsock1.Close</u> End Sub		
SocketClose(s) SocketDestory(s)	Winsock1_Close	