

“Vocabulary of Jazz”

Assit.Prof.Dr.Silapachai Kongtalin

kongtalin@hotmail.com

Mobile : 084 1631608

Web : pws.npru.ac.th/silapachai

Standard system for the notation of chords

Chord symbols follow this general sequence of components:

- Root
- Third
- Sixth or Seventh
- Tensions(/Alteration)

Root

Four measures of music showing the root of the C major chord. The first measure is labeled 'C'. The notes are C4 (bass clef, 2nd line), E4 (treble clef, 2nd space), G4 (treble clef, 3rd space), and C5 (treble clef, 1st line).

Third

Four measures of music showing the third of the C major chord. The first measure is labeled 'Am'. The notes are C4 (bass clef, 2nd line), E4 (treble clef, 2nd space), G4 (treble clef, 3rd space), and A4 (treble clef, 3rd space).

**Sixth or
Seventh**

Four measures of music showing the sixth and seventh of the C major chord. The first measure is labeled 'C⁶' and shows notes C4, E4, G4, A4, and F4. The second measure is labeled 'C⁷' and shows notes C4, E4, G4, Bb4, and F4. The third measure is labeled 'Cmaj⁷' and shows notes C4, E4, G4, Bb4, and F4. The fourth measure is labeled 'C^{o7}' and shows notes C4, E4, G4, Bb4, and Fb4.

Tensions

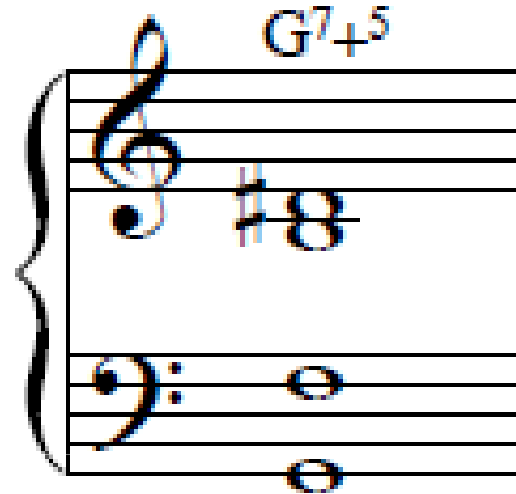
C7b9b13



Musical notation for the C7b9b13 chord. The treble clef contains notes G4, Bb4, Eb5, and G5. The bass clef contains notes C3 and G2. The chord symbol C7b9b13 is written above the treble staff.

Alterations

G7+5



Musical notation for the G7+5 chord. The treble clef contains notes G4, Bb4, and D#5. The bass clef contains notes G2 and G3. The chord symbol G7+5 is written above the treble staff.

Bass note

C7/E



Musical notation for the C7/E chord. The treble clef contains notes Eb4 and G4. The bass clef contains notes E2 and C3. The chord symbol C7/E is written above the treble staff.

Type of chords

- **Major seventh**



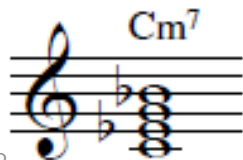
- **Sixth**



- **Minor sixth**



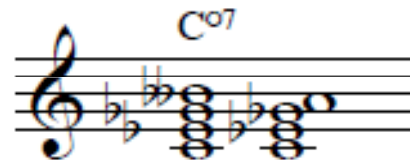
- **Minor seventh**



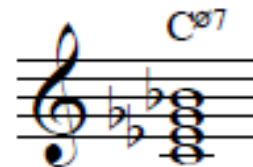
- **Dominant seventh**



- **Diminished seventh**



- **Half-diminished seventh**





“If music be the food of love, play on.”

William Shakespeare