

L'ENSEIGNEMENT MODERNE DU SAXOPHONE

COLLECTION RÉALISÉE ET DIRIGÉE PAR GEORGES GOURDET

Gilles SENON

16 ÉTUDES
RYTHMO-TECHNIQUES
16 RHYTHMICO-TECHNICAL STUDIES

pour saxophone
for saxophone

Gérard Billaudot



Éditeur

000.1004
W 20.500

2393

au Maître Daniel DEFFAYET, respectueusement

16 ÉTUDES RYTHMO-TECHNIQUES

16 RHYTHMICO-TECHNICAL STUDIES

OUVRAGE PROTÉGÉ
PHOTOCOPIE
INTERDITE
MÊME PARTIELLE
(Loi du 11 mars 1957)
constituerait CONTREFAÇON
(Code Pénal Art. 425)

pour saxophone
for saxophone

Gilles SENON

1 $\text{♩} = 100$

f *p* *f* *mf* *f* *p* *sub.* *pp* *en écho* *p* *pp* *p* *mp* *mf* *f* *en détendant un peu le mouvement* *f* *Tº 1º*

Marcato

mf sf f

This staff contains a melodic line in treble clef with a key signature of three sharps (F#, C#, G#). It features a series of eighth and sixteenth notes with accents and slurs. Dynamic markings include *mf*, *sf*, and *f*.

Marcato

mf sf f

This staff continues the melodic line with similar rhythmic patterns and accents. Dynamic markings include *mf*, *sf*, and *f*.

ff ff

This staff features a more rhythmic, eighth-note pattern. Dynamic markings include *ff* and *ff*.

p

This staff continues the rhythmic pattern with dynamic markings including *p*.

ff

This staff features a rhythmic pattern with dynamic markings including *ff*.

Rall.

T^c

p f sub.

This staff includes a *Rall.* (Ritardando) marking and a *T^c* (Crescendo) marking. Dynamic markings include *p* and *f sub.*

p cresc. f

This staff includes a *p* marking, a *cresc.* (crescendo) marking, and an *f* marking.

This staff continues the melodic line with accents and slurs.

ff

This staff features a rhythmic pattern with dynamic markings including *ff*.

2

p *f*

p *sfz* *sfz* *sfz* *sfz*

f *sfz* *sfz* *sfz* *sfz* *sfz*

sfz *mf* *sfz* *sfz* *sfz*

ten. f *ten. sfz* *ten. sfz* *sfz* *p*

f

f *sfz* *sfz* *sfz* *sfz* *sfz*

sfz *p* *f*

dim. p *f*

sfz *sfz* *sfz* *sfz* *sfz* *sfz* *sfz* *sfz* *sfz*

en diminuant

sfz dim. *sfz* *fp* *ff*

3

mf *f* *f* *sfz* *f*

sfz *f* *f* *f* *f* *sfz*

sfz *ff* *sfz* *p* *sfz*

sfz *f* *sfz*

sfz *ff* *sfz*

ff *sfz* *sfz* *sfz* *sfz* *sfz* *ff* ouvert
jurioso *très en dehors*

f *sfz* *ff* stacc. *sfz* *sfz* *sfz*

sfz *f* *sfz* *sfz*

sfz *ff* *tenu* *ff* *sfz* *ff*

$\text{♩} = 76$

f *p* *f*

sempre f *p* *dolce*

mf *8a bassa ad lib.*

f furioso *en redevenant plus calme* *p*

f furioso *poco cede* *T^o* *p un peu plus calme*

sf *sf sf sf sf* *sf sf*

f marcato

p *sfz* *f* *sfz*

p sub. *molto cresc.* *ff*

f intense *sfz* *sfz* *sfz*

p *f* *sfz* *sfz* *sfz*

mf *sfz* *sfz* *sfz*

f *f*

Detailed description: This musical score consists of seven staves of music in treble clef, with a key signature of three sharps (F#, C#, G#). The first staff begins with a piano (*p*) dynamic and includes accents and slurs. The second staff features a dynamic marking of *p sub.* with a *molto cresc.* hairpin leading to a fortissimo (*ff*) dynamic. The third staff continues with various dynamics. The fourth staff is marked *f intense* and includes several *sfz* markings. The fifth staff starts with a piano (*p*) dynamic and includes a *f* dynamic. The sixth staff begins with a mezzo-forte (*mf*) dynamic and includes several *sfz* markings. The seventh staff starts with a forte (*f*) dynamic and includes a *f* dynamic. The music is characterized by frequent slurs, accents, and dynamic changes.

Moderato ♩ = 84

♩ = ♩ précédente
Vivo ♩ = 164



Moderato ♩ = ♩ précédente

Vivo



Mod^o



Vivo



Mod^o

Vivo



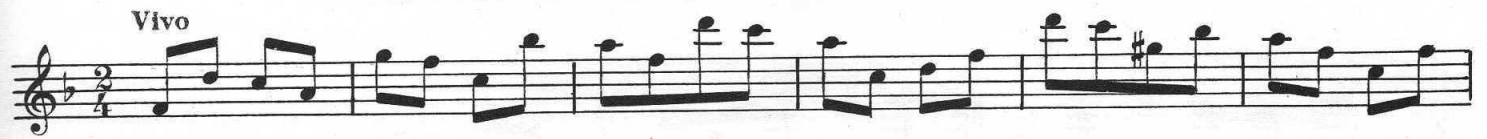
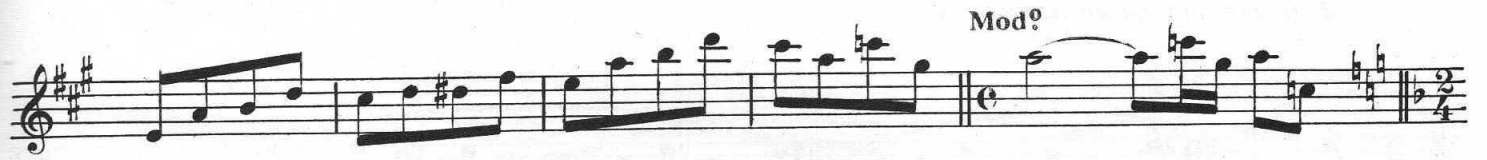
Mod^o

Vivo



Mod^o






192
♩ = 200 et plus

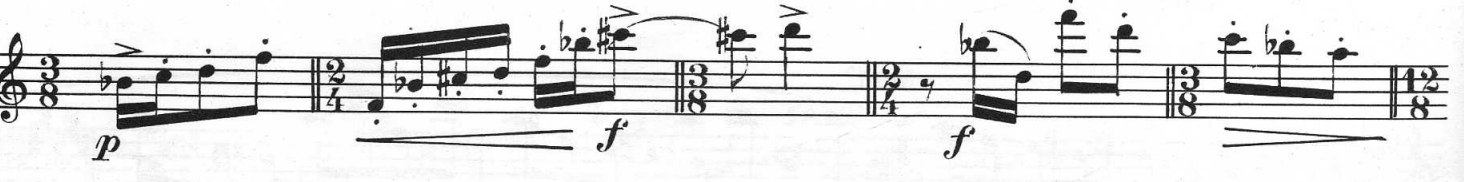
(6) 
sfz > *sfz* > *sfz* > *sfz* > *sfz* > *sfz* > *sfz* > *sfz* > *sfz* > *sfz* >
f en marquant bien les accents


sfz > *dolce* (♩ = ♩) *f* *sfz* > *sfz* >


sfz > *sfz* > *sfz* > *sfz* > *sfz* > *sfz* > *sfz* >


dolce *f*


sfz > *sfz* > *sfz* > *sfz* > *sfz* > *sfz* > *sfz* >
en *diminuant* *poco a poco*


p *f* *f*


mp *dolce* *ff*



sempre dim. mf

p

p

ff

T^o 10

f sfz sfz sfz sfz sfz sfz

Calme Marcato

sfz mp f f

p f f

dolce f sfz

sfz sfz sfz sfz f

♩ = 192

7

mf *sfz* *sfz* *sfz* *sfz*

sfz *sfz* *P sfz* *P sfz* *P sfz* *P sfz* *P* *sfz* *sfz* *sfz*

sfz *sfz* *P sfz* *P sfz* *P sfz* *P sfz* *ff* *léger* *p*

ff *p* *p*

pp *cresc.*

f *mp sfz* *p*

sfz *P sfz* *pp* *dim.* *pp*

f *sfz* *sfz* *mf* *sfz* *sfz*

p *sfz* *sfz* *sfz* *sfz* *sfz* *sfz* *f* *sfz*

p *p*

en diminuant beaucoup

♩ = 138

8 *mf dolce poco*

poco cédé *pp* *f* *f* *en dehors*

céder *pp* *pp* *lent et accel.* *cresc.*

cresc. *ff* *p* *en animant*

f *ff* *cédé* *dim.* *rall.* *p*

céder *court* *T^o* *mf*

poco animé *f* *ff*

ff *allarg.* *lent et en accélérant* *temps : temps*

en cédant un peu *T^o* *dim.* *p* *f pesante*

court

Très ralenti *pp*

♩ = 108

9

mf *sfz* *sfz* *sfz*

p *sfz*

sfz *sfz* *sfz* *sfz* *mf* *sfz*

sfz

f *mf* *p*

ff *sfz*

p *sfz* *sfz* *cresc.*

ff *p* *p*

Molto Rit. T^o

cresc.

f *mf*

f *f*

sfz *sfz* *sfz* *sfz*

p *mf* *p* *sfz* *p* *sfz*

mf *f* *sfz* *sfz* *sfz* *f*

ff *p* *sfz*

f *f*

10 *commencer lentement et accélérer progressivement*

commencer lentement et accel.

Andante mesuré

sfz

lent et accel. *rapide.....*

f

calme et régulier *poco rit. lent accel.* *poco rit.*

Lent

p en accélérant poco a poco *ff*

commencer lentement et mesuré *en ralentissant légèrement*

poco sfz
pas vite
mf

Très Lent

p e cresc.
en accélérant
ff

mesuré
en cédant
à la
mesuré décomposé

en élargissant beaucoup

lentement mesuré, sans décomposer

mp
mesuré à la et en cédant

Vivace sub. ♩ = 132

beaucoup
p

f

$\text{♩} = 100$

11. *f*

f *sfz* *sfz*

sfz *sfz* *sfz* *sfz* *sfz* *sfz* *sfz* *sfz*

sfz *sfz* *sfz* *f*

sfz *sfz*

$\text{♩} = \text{précédente}$

sempre *cresc.*

T^o I^o

$\text{♩} = \text{précédente}$

$\text{♩} = \text{♩}$ précédente

sfz sfz sfz sfz sfz sfz sfz sfz

sfz sfz sfz sfz sfz sfz sfz sfz

sfz sfz sfz mp cresc. f

sfz sfz sfz f sfz sfz sfz f

sfz sfz sfz sfz sfz sfz p sfz sfz sfz

sfz sfz sfz sfz f sfz sfz f sfz sfz
cresc.

f sfz sfz sfz sfz sfz sfz sfz

sfz sfz sfz sfz sfz sfz

♩ = 120-128

12

p léger

mf *f* *p* *sfz sfz sfz sfz*

f

tempo = tempo

p sfz sfz sfz

mf sfz sfz sfz

f

p sfz sfz sfz

mf sfz sfz sfz

mp f p en retenant beaucoup

a T. (1 temps) mesure = temps précédent

sfz sfz

temps = mesure précédente

13 *à 1 temps* ♩ = 84

p *f*

temps = mesure préc. *mesure = temps préc.*

p *sfz* *sfz* *sfz* *f* *sfz* *p*

temps = mesure

sfz *sfz* *mf* *mf* *sfz*

p

d. = d.
mesure = mesure

f *souple et chanté* *poco*

mf

allarg. *T^o*

pp *mf* *poco*

f

P léger

poco *mf*

f

d. = d. mesure = mesure
mesure = temps préc.
f *p*

f *p* *mesure = mesure*

mf

ff *mf*

mesure = mesure
pp *pp* *à 1 temps*

mesure = mesure
cresc. ff *sfz sec*

♩. = 72

14 *mf sfz sfz sfz*

f sfz sfz f

f sfz

f sfz

en diminuant sfz

ff mf mf

f sfz cresc.

ff

T^o di Marche

Musical staff for *T^o di Marche*. It begins with a treble clef, a key signature of three sharps (F#, C#, G#), and a 2/4 time signature. The music starts with a fermata over a half note, followed by a double bar line and a 6/8 time signature. The dynamics are marked *p* (piano).

T^o di Valse

Musical staff for *T^o di Valse*. It begins with a treble clef, a key signature of three sharps, and a 3/4 time signature. The dynamics are marked *mf* (mezzo-forte) and *f* (forte).

Continuation of the *T^o di Valse* staff. It features complex rhythmic patterns with slurs and accents. The dynamics are marked *sfz* (sforzando), *ff* (fortissimo), and *dim.* (diminuendo).

T^o I^o

Musical staff for *T^o I^o*. It begins with a treble clef, a key signature of three sharps, and a 2/4 time signature. The dynamics are marked *p* (piano) and *mf* (mezzo-forte).

Continuation of the *T^o I^o* staff. It features a *cresc.* (crescendo) marking and a dynamic of *f* (forte).

Continuation of the *T^o I^o* staff. The dynamics are marked *p* (piano) and *mf* (mezzo-forte).

Continuation of the *T^o I^o* staff. It concludes with the instruction *en ralentissant jusqu'à la fin* (slowing down to the end) and a dynamic of *mp* (mezzo-piano).

Mod^o

Musical staff for *Mod^o*. It begins with a treble clef, a key signature of three sharps, and a 3/4 time signature. The dynamics are marked *f* (forte) and *mp* (mezzo-piano). The instruction *(à 3 temps)* is written below the staff.

15 $\text{♩} = 92$

f sfz sfz

sfz

$\text{♩} = \text{préc.}$

sfz

$\text{♩} = \text{préc.}$

sfz (p) sfz sfz (p) sfz sfz (p) sfz sfz (p) sfz

(p) (p) (p) (p)

temps = temps

f

poco cède à 1 temps, un peu moins vite

f

p

$\text{♩} = \text{préc.}$

temps mesure précéd.

mf

tempo = tempo

Vivo $\text{♩} = \text{♩}$ préc.
 sfz

f sfz

sfz

f Tº Iº

sfz cresc.

ff

♩ = 92

16 *mf*

f

A *p f* cédé et T°

B *p* cédé et T°

C *f* cédé et T°

D, cédé et T°

E *p* *f*

f *f* en élargissant beaucoup

F T° *p* *mf*

G *f* cédé et T°

p *f* *allarg.*